

Biotinylated Human CD3E&CD3D/CD3 epsilon&CD3 delta Protein (Primary Amine Labeling)



Cat. No. CD3-HM105B

| Description | |
|------------------|--|
| Source | Recombinant Biotinylated Human CD3E&CD3D/CD3 epsilon&CD3 delta Protein (Primary Amine Labeling) is expressed from HEK293 with His tag at the C-Terminus. It contains Asp23-Asp126 (CD3E) & Phe22-Ala105 (CD3D). |
| Accession | P07766 (CD3E)&P04234 (CD3D) |
| Molecular Weight | The protein has a predicted MW of 17.9 kDa (CD3E) and 16.7 kDa (CD3D). Due to glycosylation, the protein migrates to 25-40 kDa based on Bis-Tris PAGE result. |
| Endotoxin | Less than 1 EU per µg by the LAL method. |
| Purity | > 95% as determined by Bis-Tris PAGE; > 95% as determined by HPLC |

| Formulation and Storage | |
|-------------------------|--|
| Formulation | Lyophilized from 0.22 µm filtered solution in PBS (pH 7.4). Normally 8% trehalose is added as protectant before lyophilization. |
| Reconstitution | Centrifuge the tube before opening. Reconstituting to a concentration more than 100 µg/ml is recommended. Dissolve the lyophilized protein in distilled water. |
| Storage | -20 to -80°C for 12 months as supplied from date of receipt. -80°C for 3 months after reconstitution. 2-8°C for 2-7 days after reconstitution. Recommend to aliquot the protein into smaller quantities for optimal storage. Please minimize freeze-thaw cycles. |

Background

T-cell surface glycoprotein CD3 epsilon&CD3 delta chain, also known as CD3E&CD3D, are single-pass type I membrane proteins. When antigen presenting cells (APCs) activate T-cell receptor (TCR), TCR-mediated signals are transmitted across the cell membrane by the CD3 chains CD3D, CD3E, CD3G and CD3Z. All CD3 chains contain immunoreceptor tyrosine-based activation motifs (ITAMs) in their cytoplasmic domain.

Assay Data

Bis-Tris PAGE



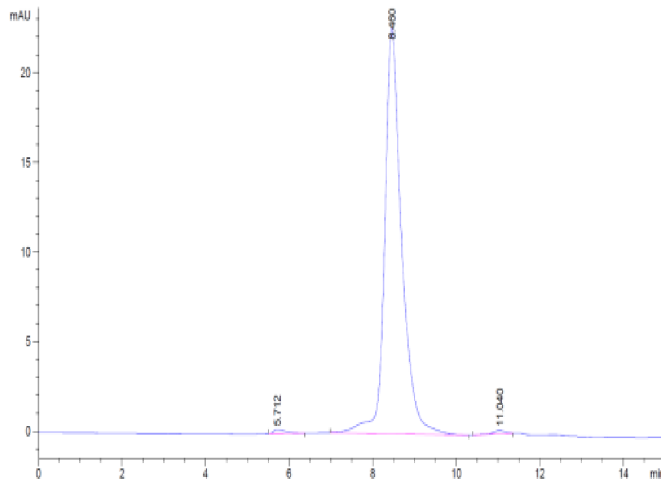
Biotinylated Human CD3E&CD3D on Bis-Tris PAGE under reduced condition. The purity is greater than 95%.

SEC-HPLC

Biotinylated Human CD3E&CD3D/CD3 epsilon&CD3 delta Protein (Primary Amine Labeling)

Cat. No. CD3-HM105B

Assay Data

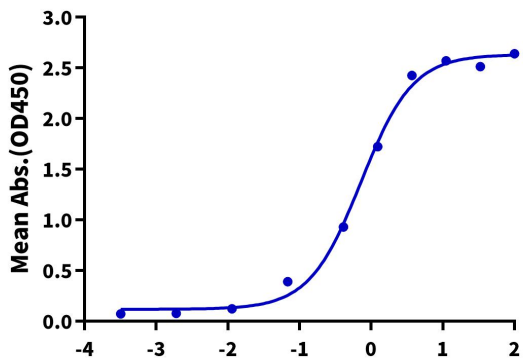


The purity of Biotinylated Human CD3E&CD3D is greater than 95% as determined by SEC-HPLC.

ELISA Data

Biotinylated Human CD3E&CD3D, His Tag ELISA

0.5µg Anti-CD3 Antibody, mFc Tag Per Well



Immobilized Anti-CD3 Antibody, mFc Tag at 5 µg/ml (100 µl/well) on the plate. Dose response curve for Biotinylated Human CD3E&CD3D, His Tag with the EC50 of 0.72 µg/ml determined by ELISA.